

# LOG POST WRAPS



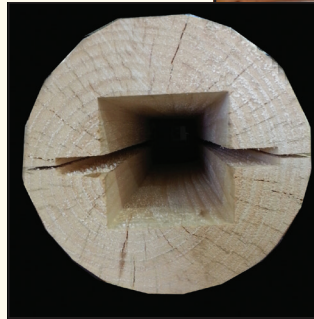
1-800-657-4666

## USED TO WRAP BASEMENT POSTS, PORCH POSTS, BEAMS AND MORE.

### 2-PIECE LOG SPECIFICATIONS:

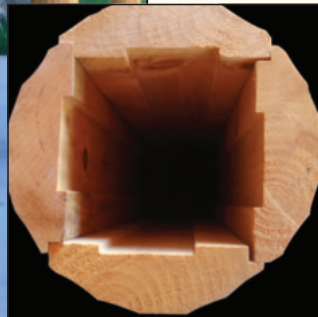
One 9" white pine log cut in half. **4" x 4" area** hollowed out inside. Will wrap a standard size jack post. Available in 8', 10' and 12' lengths. Cut to finished length then screw halves together to install. Fasteners not included.

This is a raw log product and may require sanding and/or finishing. Product is air-dried and may develop unavoidable checks or cracks as it dries.



### 4-PIECE SIDING SPECIFICATIONS:

Kiln Dried Hewn White Pine  
Creates **6" x 6" Opening**  
Available in 8', 10', 12' Lengths  
Fasteners not included



DESCRIPTION	VENDOR PART NUMBER
2 PC SMOOTH	3010100912-08, -10, -12
2 PC HAND HEWN	3010100912-08H, -10H, -12H
4 PC HAND HEWN	3010100913-08H, -10H, -12H